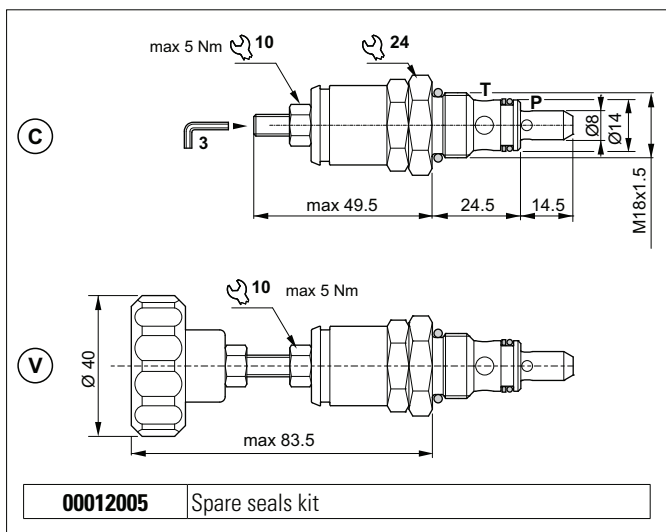


## DIRECT ACTING PRESSURE RELIEF VALVES (FOR POWER PACKS SERIES MC/MS)



The direct acting relief valve limits the pressure in a hydraulic circuit. It raises the safety level by making it impossible for the plant operators to set a higher pressure rating, than that specified in the catalogue. It has a pack spring with a mechanical stop. It has a galvanised steel body. The guided ball poppet is in tempered and ground steel.

### HYDRAULIC FEATURES

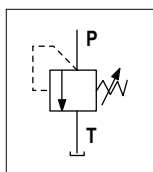
|  |                                |
|--|--------------------------------|
| Max. opening pressure                  | 290 bar                        |
| Setting range:                         |                                |
| Spring 0                               | max 50 bar                     |
| Spring 1                               | max 90 bar                     |
| Spring 2                               | max 190 bar                    |
| Spring 3                               | max 290 bar                    |
| Max. Flow                              | 20 l/min                       |
| Hydraulic fluid                        | DIN 51524 Mineral oils         |
| Fluid viscosity                        | 10 ÷ 500 mm <sup>2</sup> /s    |
| Fluid temperature                      | -25°C ÷ 75°C                   |
| Ambient temperature                    | -25°C ÷ 60°C                   |
| Max. contamin. level class with filter | ISO 4406:1999 - class 19/17/14 |
| Weight                                 | 0,12 kg                        |
| Tightening torque                      | 28 ÷ 32 Nm                     |
| Cavity (M18x1.5)                       | CN041009 (See section 15)      |

The minimum permissible setting pressure depending on the spring: see curves below

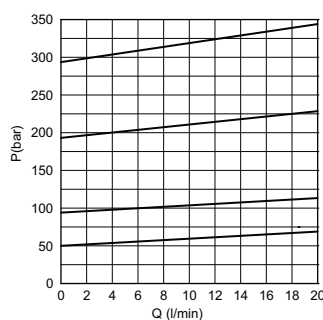
### ACCESSORIES

| Detachable plug                | Code            |
|--------------------------------|-----------------|
| <b>Unremovable version</b><br> | <b>60309200</b> |
| <b>Removable version</b><br>   | <b>60309100</b> |

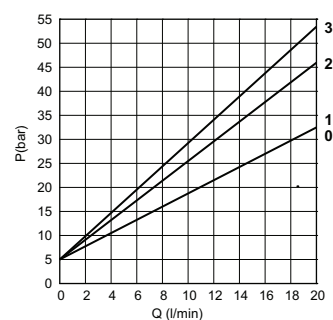
### HYDRAULIC SYMBOL



### PRESSURE-FLOW RATE



### MIN. SETTING PRESSURE



0 = 0 ÷ 50 bar - 1 = 35 ÷ 90 bar - 2 = 75 ÷ 190 bar - 3 = 160 ÷ 290 bar  
 Fluid used: mineral based oil with viscosity 46 mm<sup>2</sup>/s at 40°C.

### ORDERING CODE

| Adjustment        | Setting ranges | Code                |
|-------------------|----------------|---------------------|
| <b>C</b><br>Screw | 0 ÷ 50 bar     | <b>21000016.000</b> |
|                   | 35 ÷ 90 bar    | <b>21000000.000</b> |
|                   | 75 ÷ 190 bar   | <b>21000001.000</b> |
|                   | 160 ÷ 290 bar  | <b>21000002.000</b> |

| Adjustment            | Setting ranges | Code                |
|-----------------------|----------------|---------------------|
| <b>V</b><br>Handwheel | 0 ÷ 50 bar     | <b>21000017.000</b> |
|                       | 35 ÷ 90 bar    | <b>21000003.000</b> |
|                       | 75 ÷ 190 bar   | <b>21000004.000</b> |
|                       | 160 ÷ 290 bar  | <b>21000005.000</b> |